



# Clip-on Retrofit Grille

VCR250

Everything is possible with Ventech as your Partner.

## OUR GRILLE

Easy fit one-piece framed extract grille for retrofit applications. Designed for plasterboard ceilings and walls. Clip in attachment removes the need for battens and screws.

## DIMENSIONS

Dimensions: 255 x 255mm  
Plaque size: 200 x 200mm  
(Manufactured by others)  
Top spigot: 150mm dia



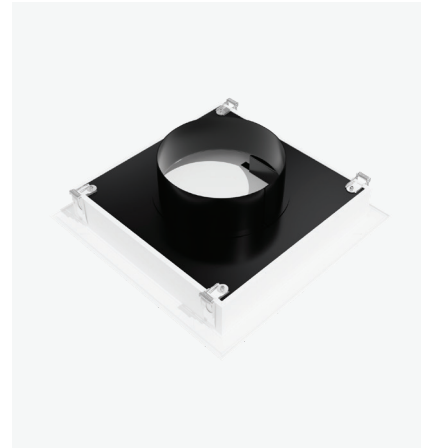
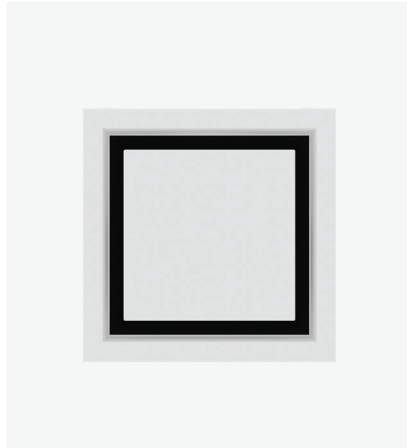
**For bathrooms,  
showers &  
laundries**



VCR250

## SPECIFICATIONS

- Ventech VCR250 framed grille with clip in attachment.
- 150mm spigot.
- If required, the exposed surfaces can be re-coloured by painting at the same time as the ceiling.
- Suitable fans, ductwork and exterior grilles also available.
- At a typical flow rate of 60-70 litres per second, pressure drop is 26 pa.



## Clip-on Retrofit Grille

- easy fit one-piece framed grille for retrofit applications
- designed for plasterboard ceilings and walls
- clip-on attachment removes the need for battens and screws

Professional customer service and outstanding company. Would highly recommend Ventech to anyone wanting a high-quality product.

**Anna Lewis**



## GET IN TOUCH

Ventilation Technology Limited  
Christchurch, New Zealand

(027) 279 6399  
enquiries@ventech.co.nz  
www.ventech.co.nz

